

# **BABYMINDER®**

highchair

*“Safe, convenient -  
for a cleaner  
changing world”*

A Babyminder highchair presents parents with a safe, convenient and hygienic facility in away from home locations in which to feed or seat their child. With a clever “push up to table” design, the unit is fully compliant with the European standard for highchairs BS EN 14988:2006.

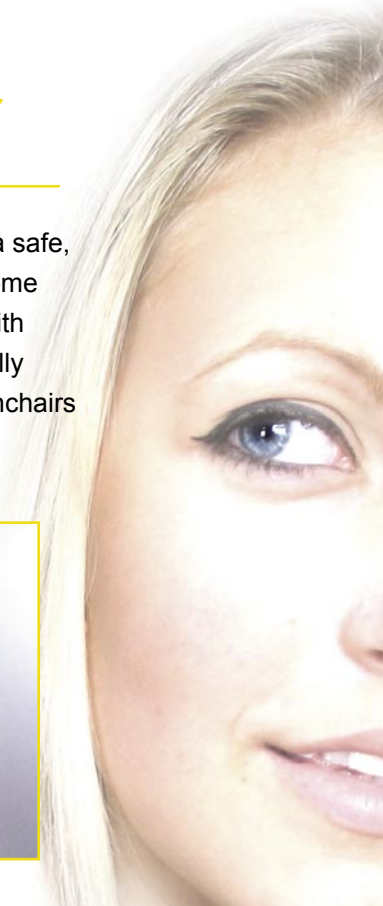
stackable for space saving



surface sanitizer



*Babyminder® products are designed for use in away from home locations visited by parents with babies and young children*



## FEATURES

- Solid robust design, made from environmentally friendly Rubberwood
- Wide base for increased stability
- Simple to assemble\*
- Stackable design to save space
- Supplied with fitted straps and standard security buckle
- Complies with European standard BS EN 14988 : 2006 for highchairs.
- 1 year guarantee against defects in parts & workmanship

## CARACTERISTICAS

- Sólido diseño hecho de madera ecológica
- Base ancha para incrementar la estabilidad
- De fácil montaje (La trona se suministra desmontada y empaquetada con instrucciones de montaje)
- Diseño apilable para ahorro de espacio
- Contiene correas y hebilla de seguridad
- Cumple con la regulación Europea BS EN 14988:2006 para sillas infantiles
- 1 año de garantía contra defectos en las partes de la silla y fabricación

## CARACTÉRISTIQUES

- Stable et robuste - construction en hêtre, écologiquement renouvelable
- À socle large pour une meilleure stabilité
- À montage facile (la chaise haute est fournie en kit)
- Empilable pour faciliter le stockage
- Les ceintures sont faciles à nettoyer et avec boucles de sécurité
- Conforme à la norme européenne EN 14988:2006 pour les chaises hautes
- Garantie 1 année contre défauts de pièces et de main-d'oeuvre

## CARACTERÍSTICAS

- Design sólido e robusto, fabricada em borracha natural ecológica
- Base larga para maior estabilidade
- Montagem simples (cadeira alta fornecida embalada para montagem pelo cliente)
- Empilhável para economizar espaço
- Fornecida com sistema de retenção lavável e fecho de segurança padrão
- Cumpre a norma europeia BS EN 14988:2006 para cadeiras altas
- Garantia de 1 ano contra defeitos ao nível das peças e mão-de-obra

## FUNZIONI

- Solido e robusto - costruzione in hevea, ecologicamente valido
- A basamento largo per dare una stabilità maggiore
- Facile da montare (viene fornito piatto per assemblaggio dall'utente)
- Impilabile per facilitarne lo stoccaggio
- Con delle cinture che si pulisce strofinando e fibbia di sicurezza
- In conformità con la normativa europea EN 14988:2006 per seggioloni
- Garanzia di 1 anno contro difetti di componenti e fabbricazione

## MERKMALE

- Stabil und robust - wird aus umweltfreundlichem Kautschukholz hergestellt
- mit breiter Aufstandsfläche und somit erhöhter Stabilität
- Einfacher Aufbau - wird als Flatpack geliefert
- Stapelbar, damit leichter zu lagern
- mit leichtabwischbare Riemen und Sicherheitsschnalle
- Entspricht europäische Norm EN 14988:2006 für Kinderhochstühle
- 1-Jahr-Garantie gegen Herstellermängel

## KENMERKEN

- Stevig en stabiel ontwerp, vervaardigd uit milieuvriendelijk rubberwood
- Brede basis voor verhoogde stabiliteit
- Eenvoudige montage (de kinderstoel wordt geleverd als zelfbouwpakket in een platte doos)
- Stapelbaar om ruimte te besparen
- Geleverd met afveegbare riempjes en standaard veiligheids gesp
- Voldoet aan de Europese norm BS EN 14988:2006 voor hoge kinderstoelen
- 1 jaar garantie op onderdelen en werkuren

## CECHY

- Jednolitá, mocná konstrukcia vykonaná z materiálov príjemných pre životné prostredie
- Široká podstava pre zväčšenie stability
- Práve do zloženia (kresielko dodané je v balení)
- Skladaná konstrukcia pre ušetrenie priestoru
- Vybavené pásom a štandardnou zámkou bezpečnosti
- Splňa požiadavky normy európskej BS EN 14988:2006 týkajúcej sa detských kresielok
- 1 rok záruky na vady častí a vady výroby

# BABYMINDER® HIGHCHAIR

Shown Below is the "Natural" colour option  
Also available in "Walnut" colour option



\*Highchair supplied flat packed for self-assembly

## BABYCHANGING TABLES ALSO AVAILABLE

- Two types of changing table available - horizontal and vertical
- Dimensions: Horizontal: 510mm (h) x 872mm (w) x 102mm (d)
- Dimensions: Vertical: 899mm (h) x 560mm (w) x 117mm (d)
- Compact ultra slim profile
- Heavy-duty integral moulded hinges for strength and safety
- Tested up to 100kg
- Opens to 87° (slightly tilting child seat to the wall)
- Dual purpose, heavy duty fixings suitable for fixing to timber studs and solid wall installations
- Unique single action retaining strap fastener
- 5 year guarantee against defects in parts and workmanship



Horizontal changing table



Wall mounted infant safety seat also available